



£325,000 *Leasehold*



A beautifully presented two-bedroom top floor apartment, set within a quiet and highly sought-after location on the edge of open countryside. Perfectly positioned, the development sits directly alongside National Trust land forming part of West Wycombe Park, offering immediate access to stunning parkland and scenic walks. At the same time, High Wycombe town centre is just approximately 1.5 miles away, providing superb convenience for day-to-day amenities and commuting. The building itself comprises just three apartments, creating an exclusive and private feel, with this particular property occupying the top floor. The accommodation includes an entrance hallway, spacious lounge, kitchen/breakfast room, principal bedroom with en-suite shower room, a further double bedroom and a modern family bathroom. Externally, there is a south-east facing balcony overlooking the green, providing a pleasant and private outdoor space. The property further benefits from allocated parking, along with visitor parking bays for guests. The apartment has been exceptionally well maintained by the current owners, and a new boiler installed in 2016. A superb apartment combining peaceful surroundings with excellent accessibility – early viewing is highly recommended.

- STUNNING TOP FLOOR APARTMENT
- PRIVATE BALCONY OVERLOOKING GREEN
- HEALTHY LEASE REMAINING
- ALLOCATED PARKING
- EN-SUITE SHOWER ROOM
- 775 SQ.FT
- SPACIOUS ENTRANCE HALL
- LOCATED NEXT TO NATIONAL TRUST LAND
- CLOSE TO J.4 OF M40
- TWO DOUBLE BEDROOMS

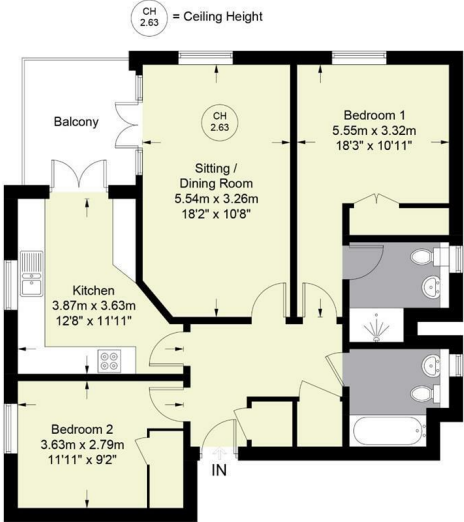


64 Copperfields, High Wycombe, Buckinghamshire, HP12 4AN

Estate Agents ~ Lettings Agents ~ Valuers ~ Independent Mortgage Advisors

Hurst Estate Agents, 1 Crendon Street, High Wycombe, Bucks, HP13 6LE Tel: 01494 521234 Fax: 01494 523392 Email: wyc@hursts.co.uk Web: www.hursts.co.uk

Copperfields
Approximate Gross Internal Area = 814 sq ft / 75.6 sq m



FIRST FLOOR

Floor Plan produced for Hursts by Media Arcade ©.
Illustration for identification purposes only. Window and door openings are approximate. Whilst every attempt is made to assure accuracy in the preparation of this plan, please check all dimensions, shapes and compass bearings before making any decisions reliant upon them.

